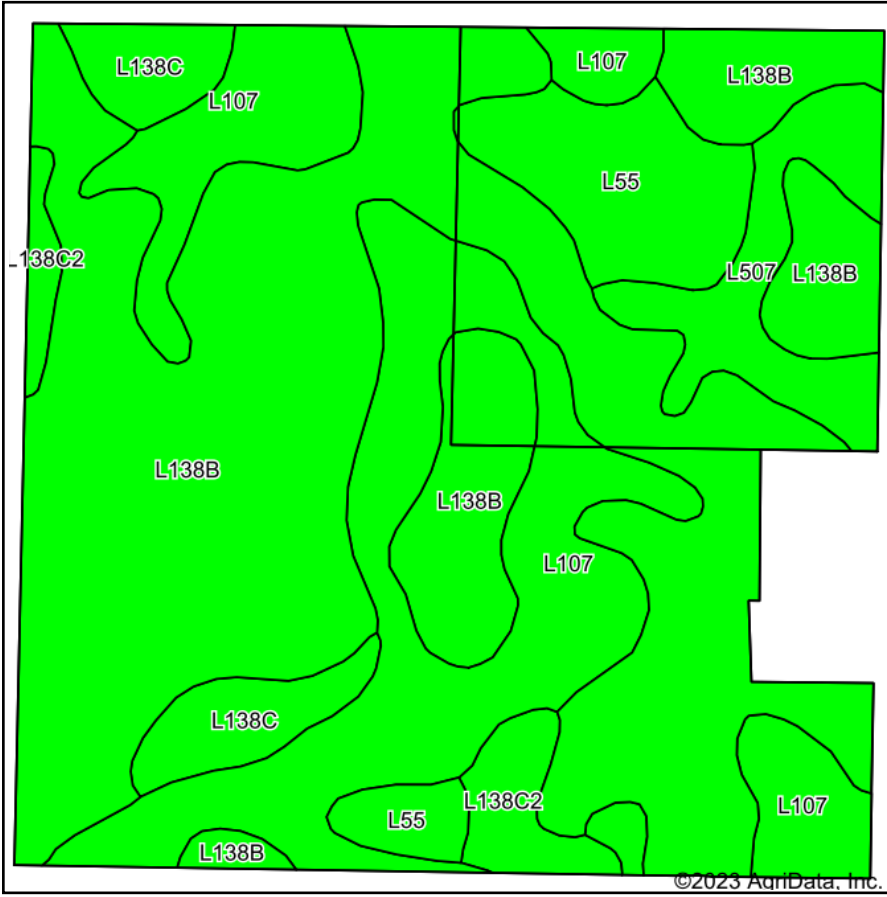
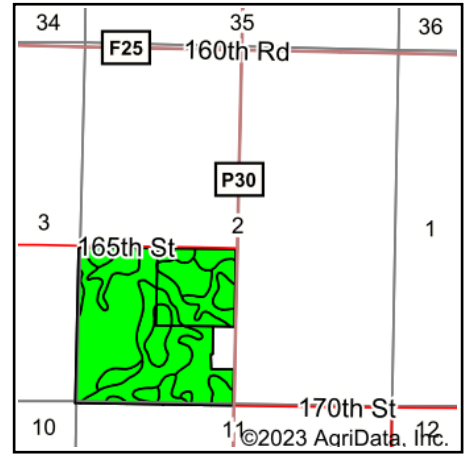


Soils Map



Soils data provided by USDA and NRCS.



State: **Iowa**
 County: **Guthrie**
 Location: **2-80N-30W**
 Township: **Cass**
 Acres: **151.74**
 Date: **12/13/2023**



Maps Provided By:



Area Symbol: IA077, Soil Area Version: 32

Code	Soil Description	Acres	Percent of field	CSR2 Legend	Non-Irr Class *c	CSR2**
L138B	Clarion loam, Bemis moraine, 2 to 6 percent slopes	84.62	55.8%		Ile	88
L107	Webster clay loam, Bemis moraine, 0 to 2 percent slopes	37.57	24.8%		IIw	88
L55	Nicollet loam, 1 to 3 percent slopes	10.63	7.0%		Ie	91
L507	Canisteo clay loam, Bemis moraine, 0 to 2 percent slopes	7.92	5.2%		IIw	87
L138C	Clarion loam, Bemis moraine, 6 to 10 percent slopes	6.53	4.3%		IIIe	84
L138C2	Clarion loam, Bemis moraine, 6 to 10 percent slopes, moderately eroded	4.47	2.9%		IIIe	83
Weighted Average					2.00	87.8

**IA has updated the CSR values for each county to CSR2.

*c: Using Capabilities Class Dominant Condition Aggregation Method

Soils data provided by USDA and NRCS.