

AgIron Mt. Pleasant

Located at the Steffes Auction Pavilion, 605 East Winfield Ave. (North Edge of Mt. Pleasant, Iowa Crossroads of Highway 218 & 34)

THURSDAY, MARCH 17, 2016 | 9AM

Selling Land & the Equipment to Farm it
SINCE 1960



West Fargo, ND 701.237.9173
Grand Forks, ND 701.203.8400
Litchfield, MN 320.693.9371
Mt. Pleasant, IA 319.385.2000
Ames, IA 515.432.6000
Sioux Falls, SD 605.271.7730

View more upcoming auctions at SteffesGroup.com

Mar 1	Farmout, ND	Mar 8	Litchfield, MN
Mar 2	Courtesy, ND	Mar 9	Grand Falls, MN
Mar 3	Fargo, ND	Mar 10	West Fargo, ND
Mar 4	Mediapolis, IA	Mar 10	Upper Midwest
Mar 4	Celebrity, ND	Mar 11	Litchfield, MN
Mar 4	Steffes.com Liquidation	Mar 11	West Fargo, ND
Mar 8	Hay Auction	Mar 15	Valley City, ND
Mar 8	Thesold Equipment	Mar 16	Fresno, ND
Mar 9	Agtron Consignment Event	Mar 16	Rappahannock, VA
Mar 10	Maed Online	Mar 17	Mt. Pleasant, IA
Mar 10	Upper Midwest	Mar 18	Genoa, IA
Mar 11	Hay Auction	Mar 22	Litchfield, MN
Mar 11	Hay Auction	Mar 22	Hopk, ND

SteffesGroup.com
West Fargo, ND 701.237.9173
Grand Forks, ND 701.203.8400
Litchfield, MN 320.693.9371
Mt. Pleasant, IA 319.385.2000
Ames, IA 515.432.6000
Sioux Falls, SD 605.271.7730



Auctions held last year
Let us help you
Call us today

over 45 AUCTIONS THIS SPRING!
Interested in a farm retirement or equipment auction, timed online event, or land auction? Give us a call to help you through the process.



View other side for 100's of more items & photos!
ONLINE BIDDING

ATTENTION CONSIGNORS!
CONSIGNMENTS WILL BE ACCEPTED ON
Tuesday, March 1st - Friday, March 4th from 8am-5pm; Saturday, March 5th from 8am-Noon
Monday, March 7th - Friday, March 11th from 8am-5pm
CONSIGNMENTS NEED TO BE ON THE LOT BY
FRIDAY, MARCH 11TH
NO CONSIGNMENTS TAKEN starting Saturday, March 12th
LOAD OUT SCHEDULE:
Fri., March 18th, 8-5pm, Sat., March 19th, 8-Noon; Mon., March 21st - Fri., March 25th, 8-5 pm
Other load out times are by appointment!



AgIron Mt. Pleasant

Located at the Steffes Auction Pavilion, 605 East Winfield Ave. (North Edge of Mt. Pleasant, Iowa Crossroads of Highway 218 & 34)

THURSDAY, MARCH 17, 2016 | 9AM

AUCTIONEER'S NOTE: Auctioneers will run multiple rings with live online bidding available on major equipment. There will be no loading assistance until 2:00PM on sale day. Cars and pickups may enter grounds at 12:00 Noon for self-loading. Registration, terms, and details at SteffesGroup.com. Equipment removal by Friday, March 25, 2016, unless other arrangements are made. Hauling and loading are available. Contact auctioneers for owner information, new consignments, or changes at 319.385.2000.



BALERS
1999 Vermeer 605L round baler, 5x6 bale, twine wrap, 540 PTO, S/N 1000818
Vermeer 605 Super J round baler, 5x6 twine only, 540 PTO, S/N 1VRA121R1N1005624
1975 Vermeer 605F round baler, new bearings, 540 PTO, twine only
JD 535 round baler, 5' twine wrap, 540 PTO
MF 124 small square baler
MF #9 baler
CASE-IH 45 small square baler, 540 PTO
NH 570 square baler, 540PTO, wire tie, swing draw bar, hyd. wire tensioner, spring loaded pickup



DUMP - ENCLOSED - LIVESTOCK TRAILERS
2009 B&B dump trailer 10,000GVWR, bumper hitch, 3' tall sides, tandem axles, brakes on both axles
2007 H&H 20' enclosed trailer, bumper hitch, stabilizer bars
1984 Kiefer Built livestock trailer tandem axle 16' 24' Gooseneck Livestock Trailer tandem axle, 1' divide
6'x18' Livestock trailer
Donahue 32' flatbed trailer
20' homemade trailer



EQUIPMENT
Danuser 3pt. Post hole digger
Chem-Farm SS saddle tanks (2) 360 gallon tanks, mounts included, for row crop or 4WD
Patriot 300 gal. saddle tanks helicopter tanks
Front bale fork
3pt. bale mover
3pt. bale spear
Yetter trash whippers
Scratcher for planter front
JD No Till Coulters
3pt. cat seeder
Kelderman 6R corn reel



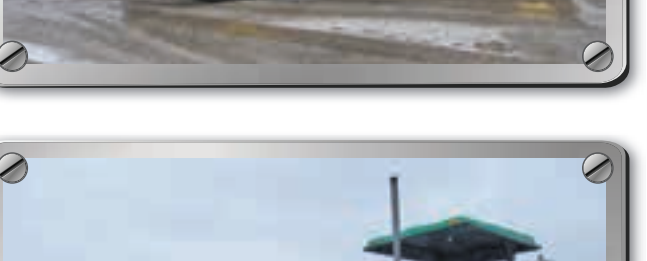
ONLINE BIDDING



FEED MIXERS
Sprout-Waldron 63FM feed mixer, precision ribbon reel, electronic scale, 3-Phase electric motor and starter
Davis S-1 feed mixer, 2 cu. ft., precision ribbon reel, 3-PH electric motor
(2) Heider auger feeder wagons
Flare box wagon w/ hoist

LAWN MOWERS
JD Z645, 230 hrs., EZ track, 48" deck, 25 HP, (30 hrs. on engine)
JD M665, 904 hrs., 71ron 60" deck,
Scag Turf Tiger, 275 hrs., 61" deck, 35 HP
Scag Tiger Cub, 619 hrs., 48" deck, Kawasaki 19 HP
Snapper 285Z, low hrs., 52" deck
Grasshopper 618, 798 hrs., 52" flip up deck, w/ snowblade
JD front mount snow blower 36", belt drive, single stage, (fits JD 525)
Front mount snow blower, 42", with bracket (fits wheel horse garden tractor)
Cub Cadet ZF S60, ZTR
Cub Cadet M60, ZTR

LIVESTOCK EQUIPMENT - FENCING
Supplement meter variable speed motor & speed control, 115 V
Stationary cattle head gate
MiraFount hog waterer, 2 hole, freeze proof (60) 12' Freestanding Interlocking Panels, NEW (120) 20' Continuous Fence Panels 5 bar tall w/ clips & connectors, NEW



SEMI TRUCKS - DUMP TRUCKS
2002 Mack CH600, 659,456.2 miles, day cab, E7460 L6, 12.0L, 10 spd., VIN 1M1AA18Y12W145274
2001 Mack CH613, 556,305 miles, day cab, 10 spd., air ride seat, air ride cab, telescoping steering wheel, 2-line wet kit, air sliding 5th, OH 40,000 miles ago by H&L Mack, rebuilt trans and new clutch 2 years ago, new brakes, VIN 1M1AA13Y41W137644
1996 Freightliner FL70, conventional cab, Caterpillar L6 engine, 10 spd., VIN 1FUWJHBA3TL607424
1989 Freightliner FL120, 925,000 miles, cab over, Cummins 855, 15 spd., air ride
(2) 1984 Mack dump trucks, Mack 300 motors, 8spds.

BLADES
Buhler 150 10', 3 pt. blade, hyd. angle, tilt, & shift
Big Ox 8' 3pt. blade
JD blade 6' 3 pt.
Big Rhino 8', 3pt. blade

SHOP EQUIPMENT
Coats 4040 Tire Changer
Lincoln 256 power mig wire welder
Ratchet binders
4x7' Overhead door w/ opener
(2) 6'x20' electric heated concrete blanket
(2) 12'x20' elec. heated concrete blankets

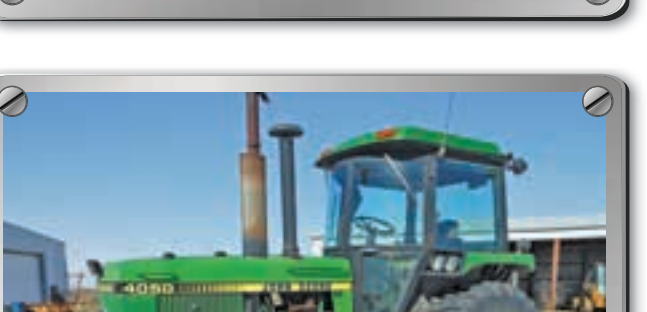
LOW BOY - DROP DECK - HOPPER BOTTOM TRAILER
1998 Load King triple axle, low boy, 27' belly, air ride, 22570R22.5 tires, S/N 22431
2001 JET semi-trailer, 48' drop deck, VIN 5JND482091H000002
1993 Wilson DW1200 hopper bottom trailer, 43', VIN 1W1MAFYD1PA

TOY HAULER - UTV - BUSES - VEHICLES
2012 Cherokee Wolf Pack, 27' Toy Hauler/ Camper bumper hitch, awning, electric jack, outdoor TV/cable hookup, roof air, gas stove, fridge, microwave, stereo system, rear screen enclosure, restroom w/shower, 205/75R14 tandem axle
2012 JD XUV 550 4x4 84 hrs., roof, windshield, front brush guard 1M0550TBCCM13619
Kubota RTV900, 1,372 hrs., grille guard, cab poly roof, soft side enclosure, vented windshield
2000 International, 209,249 miles, 66 passenger school bus, diesel 466 engine,
1999 International, 185,135 miles 54 passenger school bus, diesel 466 engine,
1996 Chevrolet Silverado 1500, 2WD, extended cab, w/ topper
2000 Chevy C3500-HD truck
1999 Chevy Suburban K2500
2004 Chevy Monte Carlo SS, 3.8L, auto, 2 dr., leather, sunroof, loaded, heated seats (Prior Salvage)
2001 Mercury Grand Marquis, 79,000 miles, Diamond edition, leather, stereo w/ DVD
1986 Mercury Grand Marquis



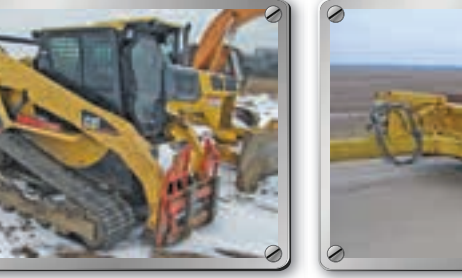
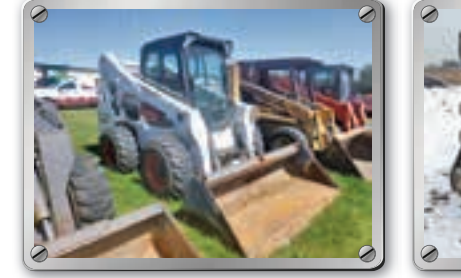
END DUMP TRAILERS - DUMP TRUCK BEDS
2008 Cora 28' quarter frame end dump, high lift tail gate, mountain tarp, AR400 floor, spring ride, tandem axle, 4 alums, 11R22.5 tires
1998 Mac 36' aluminum end dump, air ride, triple axle, frame type, roll tarp, 2 way tail gate, tandem axle w/ pusher axle, 6 alums, poly floor liner, new air bags on suspension, 385/75R24.5 tires
20' Steel Dump Truck Bed
20' Steel Dump Truck Bed
18' Steel Dump Truck Bed (Round Bottom)
18' Steel Dump Truck Bed
17' Steel Dump Truck Bed

LOADER - CARGO BOX
Great Bend 870 loader, self-leveling, w/ quick tach & stands
Cargo Box 101' x 48' x 9'6"



LOADERS
2012 JD XUV 550 4x4 84 hrs., roof, windshield, front brush guard 1M0550TBCCM13619
Kubota RTV900, 1,372 hrs., grille guard, cab poly roof, soft side enclosure, vented windshield
2000 International, 209,249 miles, 66 passenger school bus, diesel 466 engine,
1999 International, 185,135 miles 54 passenger school bus, diesel 466 engine,
1996 Chevrolet Silverado 1500, 2WD, extended cab, w/ topper
2000 Chevy C3500-HD truck
1999 Chevy Suburban K2500
2004 Chevy Monte Carlo SS, 3.8L, auto, 2 dr., leather, sunroof, loaded, heated seats (Prior Salvage)
2001 Mercury Grand Marquis, 79,000 miles, Diamond edition, leather, stereo w/ DVD
1986 Mercury Grand Marquis

LOADER - CARGO BOX
Great Bend 870 loader, self-leveling, w/ quick tach & stands
Cargo Box 101' x 48' x 9'6"



View other side for 100's of more items & photos!

Details at SteffesGroup.com



Auctioneers & Clerk: Steffes Group, Inc., 605 East Winfield Avenue, Mt. Pleasant, IA 52641
Tim Meyer, Terry Hoenig, Chris Richard, Lynn Richard, Jason Denning, Nate Larson, Duane Norton, Seth Tweat
Scott Steffes, Brad Olstad, Bob Steffes, Max Steffes, Ashley Huhn, Eric Gabrielson, Randy Kath, Jared Miller
319.385.2000 | SteffesGroup.com



TERMS: All items sold as is where is. Payment of cash or check must be made sale day before removal of items. Statements made auction day take precedence over all advertising. \$35 documentation fee applies to all titled vehicles. Titles will be mailed. IA Sales Tax laws apply. Canadian buyers need a bank letter of credit to facility border transfer.

Aglron[®] Mt. Pleasant

THURSDAY, MARCH 17, 2016 | 9AM

Located at the Steffes Auction Pavilion, 605 East Winfield Ave.
(North Edge of Mt. Pleasant, Iowa Crossroads of Highway 218 & 34)

AUCTIONEER'S NOTE: Auctioneers will run multiple rings with live online bidding available on major equipment. There will be no loading assistance until 2:00PM on sale day. Cars and pickups may enter grounds at 12:00 Noon for self-loading. Registration, terms, and details at SteffesGroup.com. Equipment removal by Friday, March 25, 2016, unless other arrangements are made. Hauling and loading are available. Contact auctioneers for owner information, new consignments, or changes at 319.385.2000.



View website for more pictures, updates & sale order!



TRACK TRACTORS

2008 JD 9530T, 1,961 hrs., powershift, deluxe cab, comfort package, buddy seat, 4 hyd., BB, Cat 5 drawbar, front and rear HID lighting, AutoTrac ready, dual beam radar, 20 front weights, 36" tracks, S/N RW9530T902438
1995 CAT 85C, powershift, 24" tracks 80%, 4 hyd., S/N 9TK01475

4WD TRACTORS

2006 JD 9230, 4,125 hrs., powershift, BB, rear wheel weights, front and rear duals, S/N RW9320P040736
JD 8640, 7,300 hrs., 3 pt., no PTO, 3 hyd., 20.8x38
Case 4490, 6,178 hrs., 3 hyd., 3 pt., 1000 PTO, OH 1 year ago 20.8x34" duals
Steiger, air ride seat, Cat 3208, auto trans, BB, 2 hyd., 23.1R30 singles, S/N 6241

MFW TRACTORS

2010 JD 8259R, 1,200 hrs., powershift, 5 hyd., power beyond, 3 pt., PTO, 2630 display, EZ steer, New Holland 7500 Easy Guide system for planting, Starfire 3000 globe SF1, straight axle, diff. lock, leather, buddy seat, (2) 1,000# inner rear wheel weights, (2) 500# & (2) 165# outer rear wheel weights, 22 front weights, fenders, 480/80R60 rear duals, 480/70R34 fronts
2013 JD 5100 M, 397 hrs., cab, synchro, LH reverser, 3 pt., 540 PTO, 3 hyd., cab, XM Radio, buddy seat, mid-mount couplers, sells w/H260 loader, front aux. hyd. with joystick control, self-leveling bucket, rear wheel weights, 18.4R30 rears, 12.4R24 fronts
2008 Kubota M95X, 397 hrs., cab, sells w/LA1301S loader, 18.4x34 rears, S/N 50427
2008 Agco RT 110A, 310 hrs., CVT, 3 pt., air ride cab, air ride seat, S/N 115007

COMBINES - HARVESTER

2004 NH T170A, 1,150 hrs., open station w/canopy, Synchro Command, 2 hyd., 3 pt., 540 PTO, sells w/ NH 32LC loader, joystick, aux. hyd., 11.2R24" fronts, 16.9R30" rears, S/N HJE001194
2004 JD 6420, 5,210 hrs., power quad, LH reverser, 3 pt., 540/1000PTO, 2 hyd., cab, air, heat, air seat, radio, cold weather package, S/N L0642008424618
2000 JD 6405, 8,537 hrs., open station w/canopy, 3 pt., 540 PTO, 2 hyd., sells w/loader, S/N 264003L
1999 JD 6410, 8,748 hrs., w/ JD 640 loader, power quad, 3 pt., PTO, 3 hyd., cab, NEW rear tires, S/N L06410V254897
JD 4850, 9,000 hrs., powershift, 3 pt., PTO, 3 hyd., cab, 18.4x42 rears
1997 Case-IH 8910, 8,714 hrs., 18/4 powershift, cab, air, 520/85R38 rears, 14.9R30 fronts
2004 JD 4310, 2,200 hrs., ROPS, 3 pt., 540 PTO, 72" mid-mount mower deck
MF 1260, 1,322 hrs., hydro, ROPS, 3 pt., 540 PTO, diesel, (365 hrs. on new engine), new injectors, mid mount 72" mower deck, turf tires

2WD TRACTORS

1993 JD 6400, 3,505 hrs., power quad, open station, ROP, 3 pt., 540/1000 PTO, 3 hyd., 18.4x38, S/N L06400P105025
1985 JD 4050, 6,734 hrs., cab, quad range, 2 hyd., 3 pt. (missing top link) 540/1000 PTO, 6 front weights, new cab kit, 18.4x38, S/N RW4050H006632
1980 JD 4640, 7,661 hrs., powershift, 2 hyd., 3 pt., large 1000 PTO, 55 series motor, OH 2 years ago/2,000 hours ago, 20.8-38", S/N 4640P016968R

2WD TRACTORS CONT.

1977 JD 4630, hrs. unknown, quad range, 2 hyd., 3 pt., 1000 PTO, 18.4x42, S/N 032794
1973 JD 4430, 11,454 hrs., quad range, cab, 3 pt., PTO, 3 hyd.
1976 JD 2640, 5,060 hrs., open station, 2 hyd., 3 pt., 540 PTO, 16.9x30, S/N 2579921
1967 JD 4020, open station w/canopy 2 hyd., 3 pt., 1000 PTO, 18.4x34, S/N 161782R
1983 IH 5288, 7,711 hrs., 2WD, standard cab, 3 pt., 1000 PTO, LED lights, 8 front weights, rear 20.8/38 rear duals, S/N 2580004U004377
Case 2290, cab, 2 hyd., 3 pt., 540/1000 PTO
Oliver 2150, diesel
Oliver 1800, gas, has been OH
Oliver 770, gas, flat top fenders

ANTIQUE TRACTORS

Oliver OC-6 Cleat Track Tractor
(2) AC C. (1) w/ Woods belly mower
Farmall Cub S/N 70761
Farmall 1 row cultivator, mid mounts for Farmall Cub
Farmall 1 bottom plow, fits Farmall Cub
Farmall sickle mower, 5' fits Farmall Cub
Farmall manure loader, fits Farmall Cub
Farmall front mount blade, 48", fits Farmall Cub w/ hyd. lift

PLATFORMS

2010 Harvestmore 730, full finger auger, 30" fits newer style Case combine
2008 MF 8200, 25', S/N AAHW08213
2003 JD 930F, hyd. fore/aft, 30", full fingered, stubble lights, standard hook-ups, poly bottom, S/N H00930F701927
2001 JD 930F, hyd. fore/aft, 30", full fingered, stubble lights, standard hook-ups, poly bottom, missing gear box on right side, PTO shaft needs assembled, carrier bearing mount is broken, inspection covers are missing on drum, S/N H00930F692675
JD 925F, hyd. fore/aft, full finger, poly skid, S/N H00925F701475

CORN HEADS

2008 MF 3000, 6R30 S/N RHN27590
1997 JD 893, 8R30, knife rolls, S/N H00893X670455
JD 653, 6R30, CM, poly
JD 643, poly, S/N 516482
JD 643, knife rolls, tin, S/N 469402
JD 444
IH 844, 4RW, S/N 07301000026924

HEAD TRAILERS

2010 Maurer M32
Head Cart

EXCAVATOR - DOZERS - SCRAPERS

2005 Caterpillar 330 CL excavator, 9,134 hrs., S/N DKY2619
1999 Fiat-Allis FD 175 dozer, powershift, cab, 10' semi U blade
CAT D7E dozer, 12' semi-u blade, 24" grouser pads, ROPS, sweeps
CAT D4H dozer, ROPS, 1,383 hrs. on new motor, S/N 8P800860
Komatsu D6SS-6 track loader, Less than 2,000 hrs. on OH, 4 in 1 bucket, S/N 30106
LaPlant Choate C108, 12 yd. pull type scraper, converted to hydraulic, S/N C108-814
CAT 60 scraper dolly wheel
Reynolds scraper, 14yd.
Carco 60 winch Model 60PS K1110, S/N 6-2529
JRB quick coupler fits JD 330 excavator

TELEHANDLER - BACKHOE - TRENCHER

2001 CAT TH460 telehandler, 7,167 hrs., cab, front leveling jacks, new tires approx. 6 months ago
JD 310C, 4,319 hrs., 2WD, cab, loader backhoe, 24" bucket S/N T0310CA732039
Vermeer V-8100 trencher, 625 hrs., front backhoe, 5 1/2' depth, 8" wide tile boot, 4x4, Cummins 85HP diesel, backfill blade, S/N 1VPR092NX1000211
4' Sheeps Foot
Flat Roller
Telehandler Truss Boom
Telehandler 6'x20' work platform

SKIDSTEERS - ATTACHMENTS

2013 Case SV250, 2,550 hrs., cab, heat, A/C, aux. hyd.
2012 Bobcat S770, 1,550 hrs., 2 spd. hydro., aux. hyd., cab, heat, seat suspension, quick attach, 3,300 lift cap, bucket, rubber tires, S/N A3P411996
2006 Cat 287B, 3,395 hrs., track skid loader, cab, heat, aux. hyd., S/N CAT0287BV2SA00721
IH 4130 skid steer, gas engine, 48" bucket, "T" handle controls, S/N 000914
Case 1845 unloader gas, oversized bucket, needs engine (hole in block)
Stout Tree & Post Puller w/ skid steer quick attach, NEW
Stout Rock Bucket Grapple 72-3 w/ skid steer quick attach, NEW
Stout Grapple Bucket HD72-FB w/ skid steer quick attach, NEW
Stout Full-Back 48" Pallet Forks w/ skid steer quick attach, NEW
Stout Brush Grapple XHD 84-6 w/ skid steer quick attach, NEW
Stout Brush Grapple HD72-4 close-line w/ skid steer quick attach, NEW

PLANTERS

NEW Great Plains YP1625A 16R30, hydraulic drive assembly, bean and corn disks, low profile markers, HD down pressure springs, center flex S/N GPB1093F
2012 CASE-IH 1220, 6R30, hyd. drive, liquid, dry insecticide, trash wheels, disc openers, 6" press wheels, markers, Pro 700 monitor
2009 CASE-IH 1250, 24R30, single seed hopper, trash wheels
2008 CASE-IH 1250, 24R30, bulk fill, front fold, vacuum, 2 pt., insecticide, markers, 6" press wheels, spring pressure, Tru Count Air Clutches S/N Y7S007011

PLANTERS CONTINUED

2008 CASE-IH 1240, 16R30, hyd. drive, draw bar, pivot, insecticide, S/N CBJ036213
CASE-IH 800 planter, 6R30, draw bar, Cyclo Air, dry fertilizer, markers
2007 Kinze 3000 6/11 split row planter, no till coulters, Martin row cleaners, in cab air controls, Precision 20/20 seed sense monitor, Precision corn meters, 500 acres on complete tune-up.
Kinze 3200, 12R30, front fold, box ext., Keaton seed firmers
1991 Kinze 2300, 8R36, twin line, pivot, NT coulters, row clutches (4 row), seed firmers, NT coulters on dry fertilizer
JD 7000, 12R30" liquid fertilizer tanks, single disk openers, Yetter row cleaners, John Blue squeeze pump, precision units, in furrow fertilizer stainless steel tubes, ground drive chain release and insecticide boxes and a tarp. Bean brush units in the boxes, Dickey John monitor
JD, 6R30", insect hoppers, 3pt. on Kinze tool bar
JD 7000, 8R36, front fold, 3 pt.
1993 White 6186, 16R30, fertilizer, markers, 650 gal liquid tanks, (no hyd pump) S/N 607722
White 5100, 8RW Yetter trash whippers, hyd. pump, insect. boxes, markers
1985 IH 800 Cyclo Air, 6R30, markers
Deutz Allis 385, 4R, liquid fert. tanks
MF 80, 4R sweet corn planter, 3 pt., shoe type

SKIDSTEERS - ATTACHMENTS CONT.

Stout Brush Grapple 72-8 skid steer quick attach, NEW
Stout Brush Grapple 66-9 skid steer quick attach, NEW
Stout Bale Spear-Round w/ skid steer quick attach, NEW
Stout 84" Material Bucket w/ double-cut edge, w/ skid steer quick attach, NEW
TillSpear Hydraulic tilting double bale spear, 120.5"Wx30"Hx48"L rated @3,800lbs. sold with a universal mounting setup to allow bolt/weld on attachments, New to the Market
Lowe Hyd Auger 750 w/ 12", w/ skid steer quick attach, NEW
Lowe Hyd Auger 1650 w/ 9", 12" & 18", w/ skid steer quick attach, NEW
(2) Hawz Tree Puller push bar, heavy duty, NEW
(2) Hawz Receiver hitch 2" tube, NEW
Hawz 84" rock and brush grapple, heavy duty, cylinder protection, NEW
Hawz 76" root grapple, cylinder protection, heavy duty, NEW
Hawz 74" rock and brush grapple, heavy duty, cylinder protection, NEW
Hawz 68" rock and brush grapple, heavy duty, cylinder protection, NEW
48" Pallet Forks w/ skid steer quick attach, NEW
(4) Maxam 10-16.5 Skid Steer Tires 10 ply, NEW
Weld On Quick Tach Plate
Weld On Quick Tach Plate
Kubota L2283, 72" loader bucket S/N 10275
Kubota L2266, 66" loader bucket, (fits LA514 loader) S/N A0007
Kubota BT3002A, 15" backhoe bucket S/N B0647
Kubota BT2911, 12" backhoe bucket S/N A0249
Kubota B1625, 54" loader bucket (fits LA504 loader) S/N A1551
Grouser tracks

DRILLS

JD 750 no-till drill, 15', 2 bar harrow, markers, lights, down pressure valve, lock up valve, S/N 014421
JD 14-7 10' drill, 7" spacing, double disc openers, small seed attachment, drag closers, JD cylinder
JD Van Brunt 9' drill, w/ grass seed attachment, steel wheels
JD 10' grain drill w/ grass seed

SPRAYERS - WATER WAGONS

1998 Rogator 554, 2600 hrs., 4x4, Cummins, 60' boom, 500 gal. tank, rinse tank, 3 body nozzles, foam markers, Raven 460 control, hyd. adjustable axles, fenders, new wet booms 1 year ago.
Patriot 150, 2,700 hrs., 700 gal. poly tank, 80' front fold booms, hydrostatic, foam marker, rinse tank, hydraulic tread adjust, 12.4x38 tires
2010 Hardi Navigator 4000, 80' boom, 1,200 gal. tank, pull type, Raven SCS 450 monitor/controller, 4 section shut off, foam marker, rinse tank

ATTENTION CONSIGNORS!

CONSIGNMENTS WILL BE ACCEPTED ON
Tuesday, March 1st - Friday, March 4th from 8am-5pm
Saturday, March 5th from 8am-Noon
Monday, March 7th - Friday, March 11th from 8am-5pm
CONSIGNMENTS NEED TO BE ON THE LOT BY
FRIDAY, MARCH 11TH
NO CONSIGNMENTS TAKEN starting Saturday, March 12th
LOAD OUT SCHEDULE:
Friday, March 18th, 8-5pm, Saturday, March 19th, 8-5pm
Monday, March 21st - Friday, March 25th, 8-5 pm
Other load out times are by appointment!

PLANTERS CONTINUED

2007 Kinze 3000 6/11 split row planter, no till coulters, Martin row cleaners, in cab air controls, Precision 20/20 seed sense monitor, Precision corn meters, 500 acres on complete tune-up.
Kinze 3200, 12R30, front fold, box ext., Keaton seed firmers
1991 Kinze 2300, 8R36, twin line, pivot, NT coulters, row clutches (4 row), seed firmers, NT coulters on dry fertilizer
JD 7000, 12R30" liquid fertilizer tanks, single disk openers, Yetter row cleaners, John Blue squeeze pump, precision units, in furrow fertilizer stainless steel tubes, ground drive chain release and insecticide boxes and a tarp. Bean brush units in the boxes, Dickey John monitor
JD, 6R30", insect hoppers, 3pt. on Kinze tool bar
JD 7000, 8R36, front fold, 3 pt.
1993 White 6186, 16R30, fertilizer, markers, 650 gal liquid tanks, (no hyd pump) S/N 607722
White 5100, 8RW Yetter trash whippers, hyd. pump, insect. boxes, markers
1985 IH 800 Cyclo Air, 6R30, markers
Deutz Allis 385, 4R, liquid fert. tanks
MF 80, 4R sweet corn planter, 3 pt., shoe type

VERTICAL TILLAGE - DISCS

CASE-IH 496 23' disc, 21" front notched blades, 9" spacing, rear smooth blades, tandems across
IHC 496, 25' disc
IHC 490, disc, hyd. wing fold
IHC 475, 18 1/2' disc
JD 10' wheel disc

DISC RIPPERS - CHISELS - CULMULCHERS

CASE-IH 527B EcoLo-Tiger disc ripper, 5 knife, with disc leveler
Landoli Soil Master 275 disc chisel, pull type, leveling bar harrow
Glenco Soil Saver disc chisel, 11 shank
JD 920 24" roll mulcher, wings, crow-foot rollers
Kewanee 20' cuttumulcher, flat fold
Brillion 12' cuttumpacker
Bearcat 25' cuttumulcher
Pull type chisel plow
IHC 7200, 6 btm. plow, trips
AC 4 btm. plow
3 btm. plow pull type

FIELD CULTIVATORS - HARROWS

DMI Tiger-Mate II field cultivator, 24', 9" shovels, 5 bar spike harrow
JD 985 field cultivator, 55', S/N N00985X001425

SPRAYERS - WATER WAGONS CONTINUED

Hardi 550M Navigator, pull-type sprayer, 45' boom, 550 gal. hyd. fold, hyd. drive, Raven controls, raise & tilt
Kinze Spray Caddy 1,000 gallon, Raven flow meter, flow regulator, pull between capable 2,200 gal fiberglass water tank on HD gear (2) poly water tanks on tandem axle trailer w/ transfer pump (1) 1500 gal., (1) 1000 gal.
1,000 gal pull behind spray wagon, Raven flow meter, flow control, Ace 1 1/4" hyd. Pump, large tires, 60" tread

NH3 TOOL BAR - MANURE SPREADERS - HOSE REELS

DMI 3250 toolbar knife applicator, 16x30 (3-PH), 37.5', 3 pt., includes cover disks, equipped for liquid, easily converted to NH3
DMI 13 knife NH3 applicator, new knives and closers
JD 450 manure spreader, hydro push
IH 530 manure spreader, end gate, new apron gal liquid tanks, (no hyd pump) S/N 607722
Hobbs Reel Rain 1375XL irrigation, 540 PTO, 1000' hose, water force auto retracting, S/N 25529
Water / Manure Hose Caddy, 540 PTO, 1000' of 5" hose, rear roller guides
Water / Manure Transfer Pump, 540 PTO, on 2 wheeled cart

SEED RUNNER - GRAIN VAC - AUGERS

2015 Unverferth 3750 SeedRunner, 2 compartment, roll tarp, automatic talc applicator, wireless hand held remote, scales, 8" self-loading conveyor, triple axle, 235/85R16 singles
Rem 2700 grain vac on trailer, full set of pipe and hose, S/N 0160
Rem 2700 grain vac, S/N RM-2700-2237
Westfield WR 80-61 auger
Feteri 10' swing hopper auger
Seed Vac seed conveyor
8" Hydraulic Seed Auger attaches to gravity box
(2) Killbros 375 bu. GF wagons on Killbros gears

MOWER CONDITIONERS

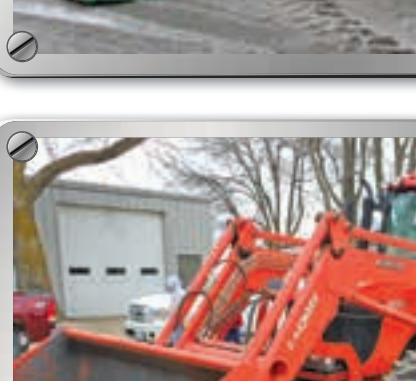
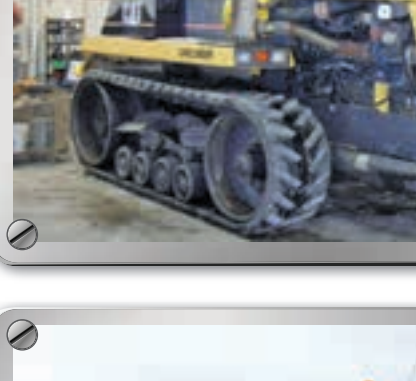
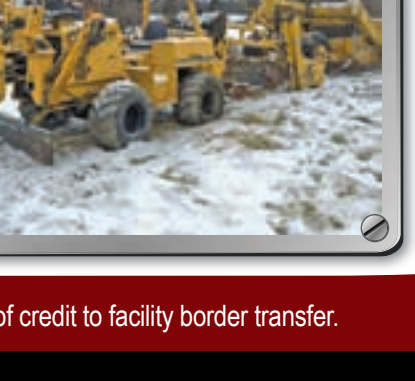
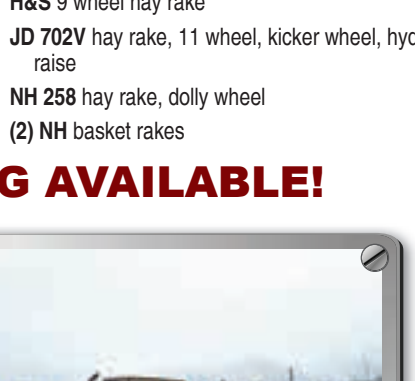
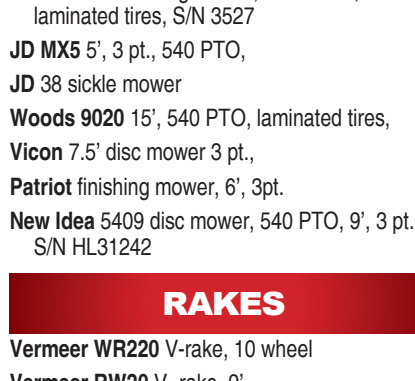
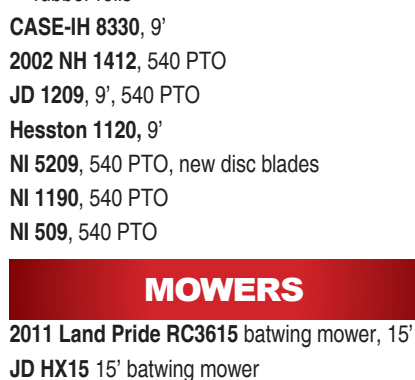
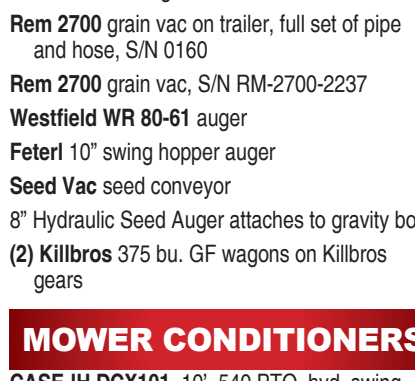
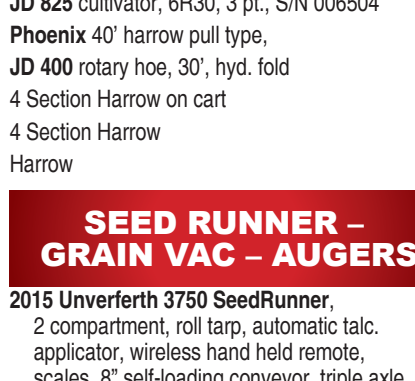
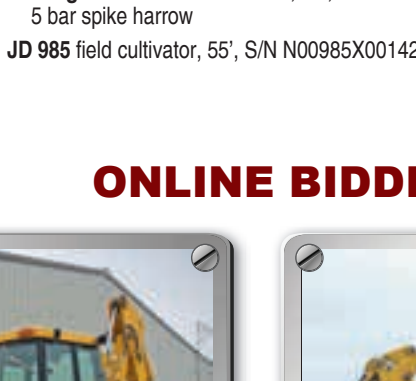
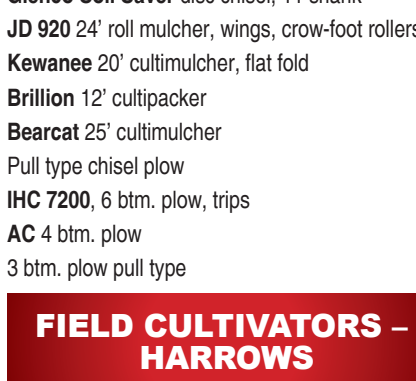
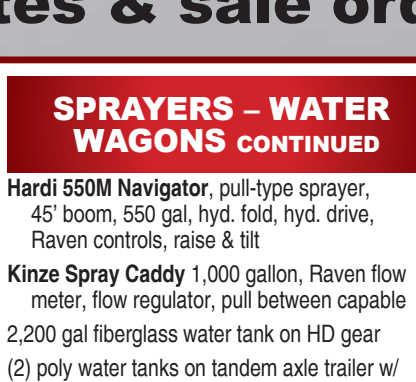
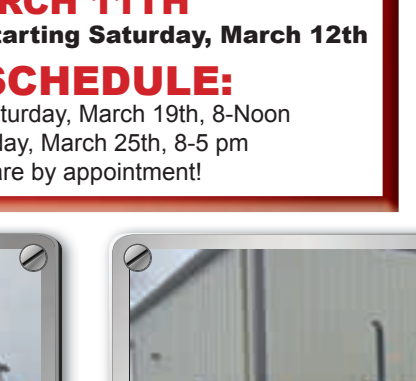
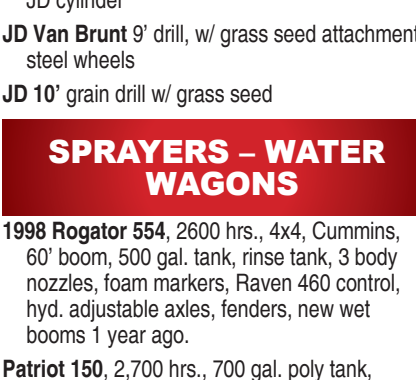
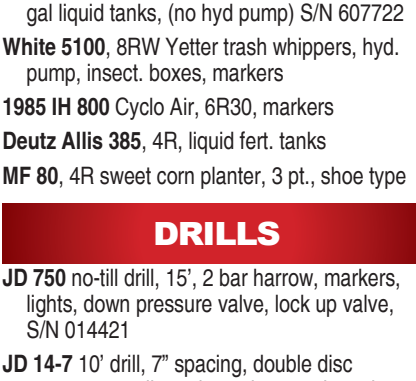
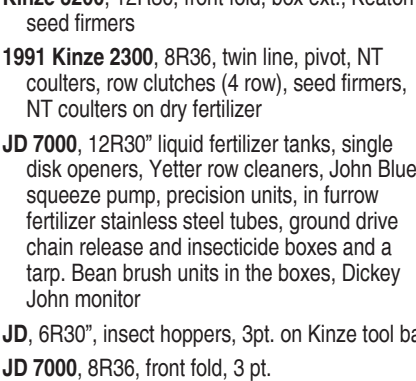
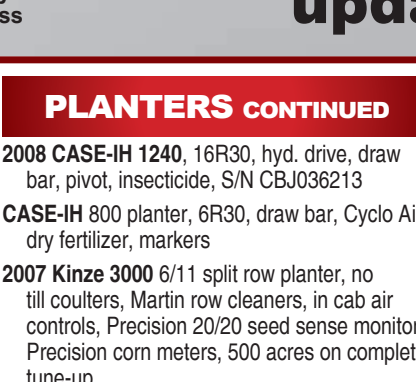
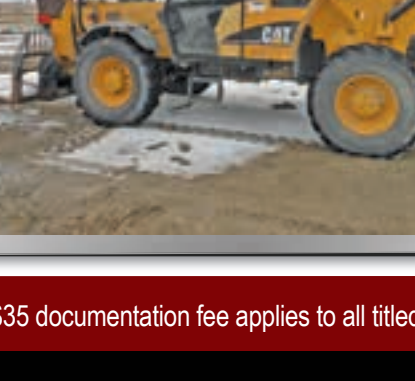
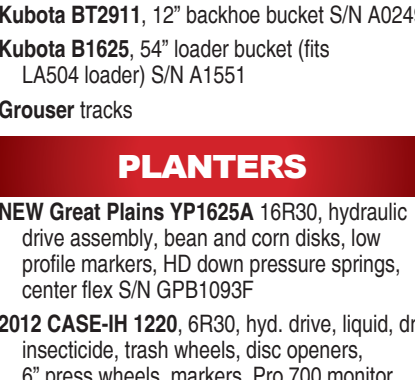
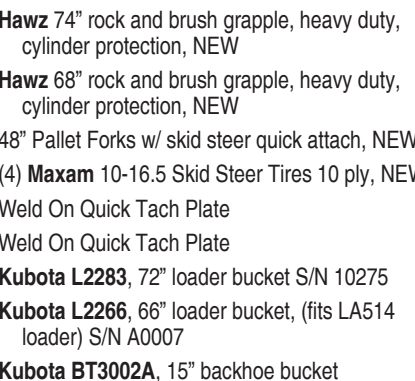
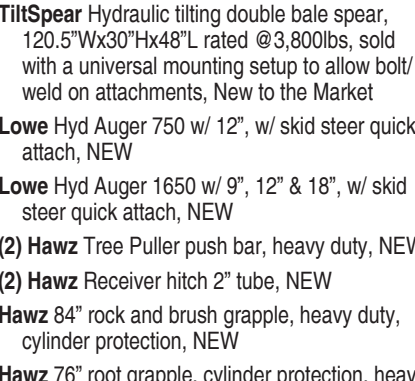
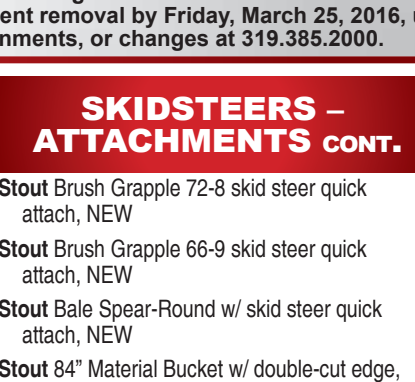
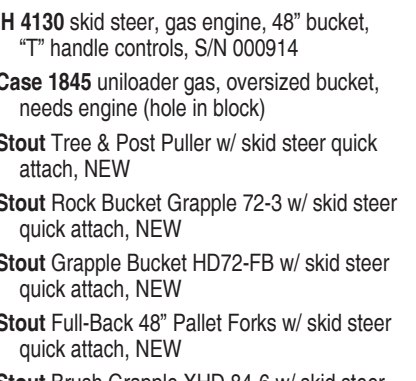
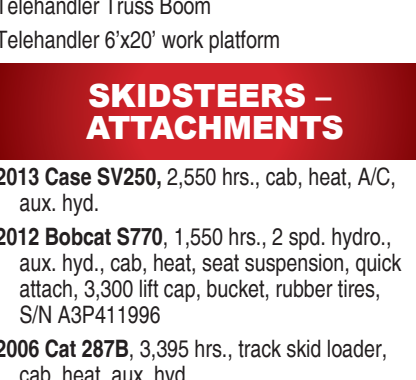
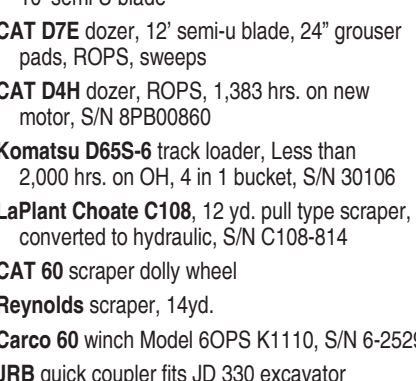
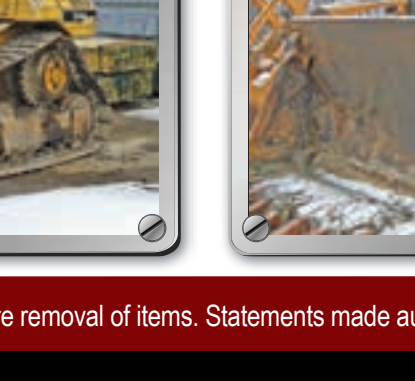
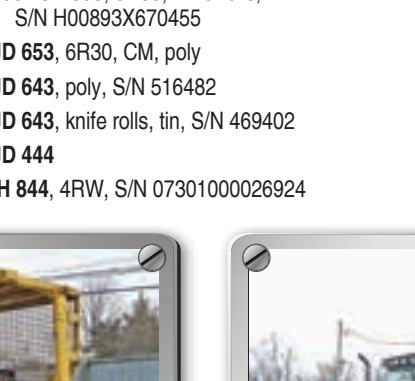
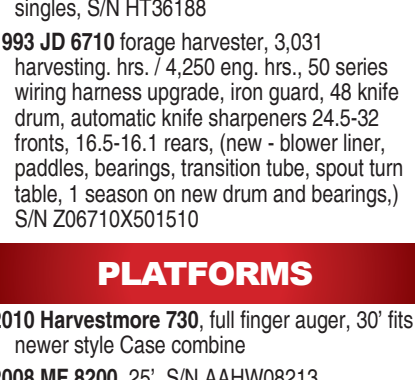
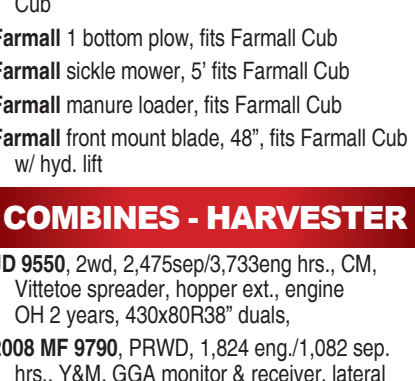
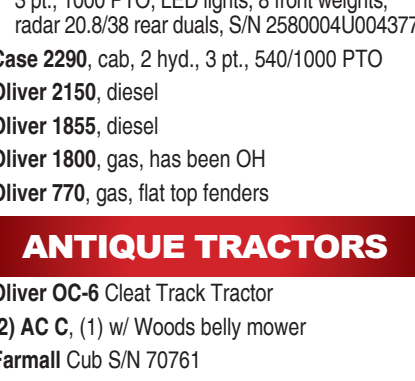
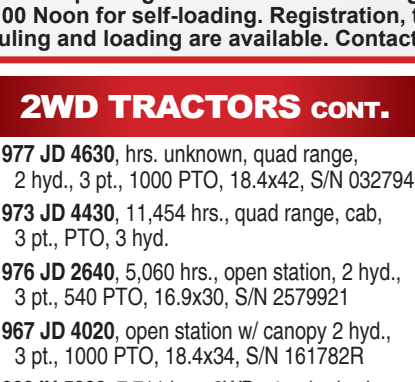
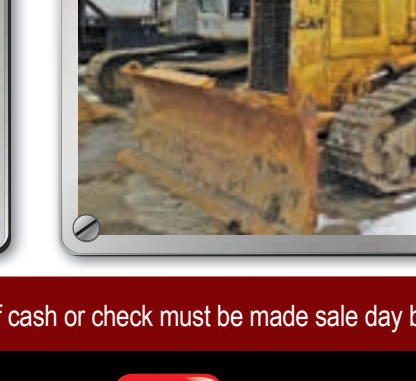
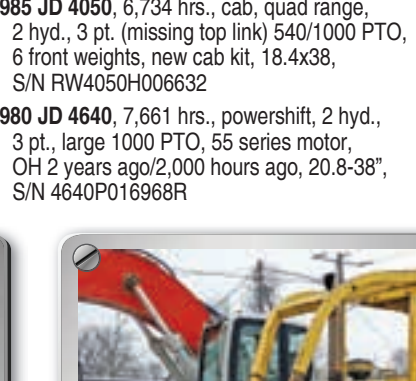
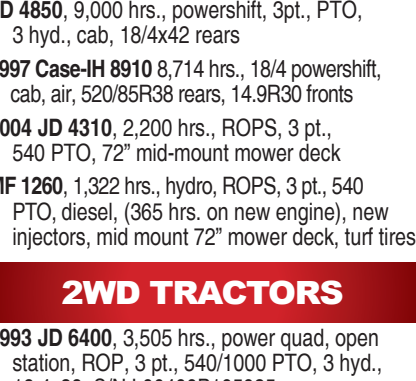
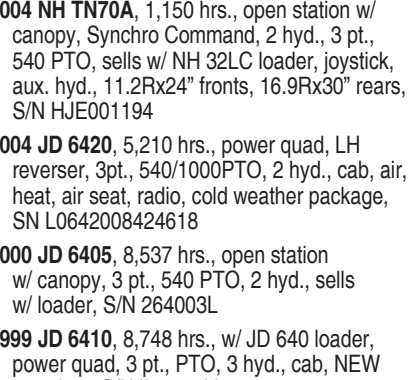
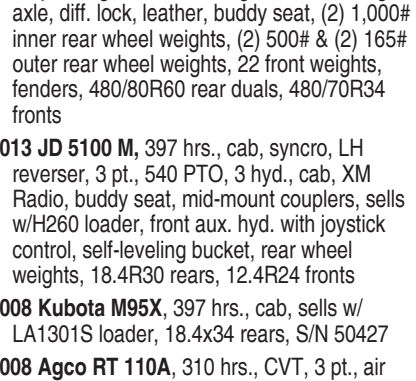
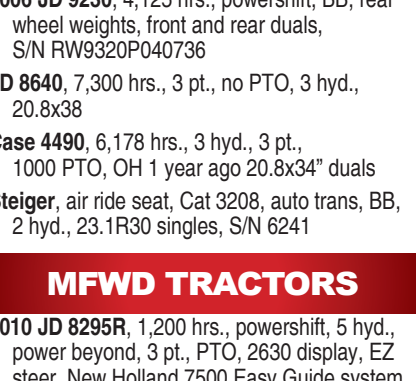
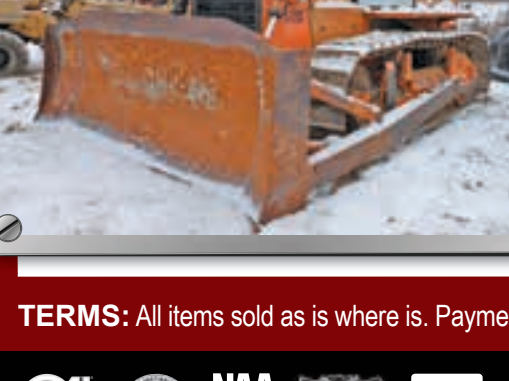
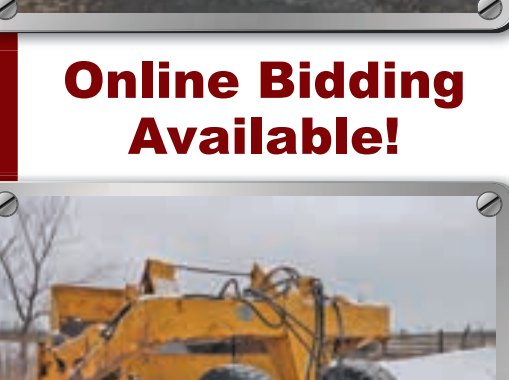
CASE-IH DCX101, 10', 540 PTO, hyd. swing, rubber rolls
CASE-IH 8330, 9'
2002 NH 1412, 540 PTO
JD 1209, 9', 540 PTO
Hesston 1120, 9'
NI 5209, 540 PTO, new disc blades
NI 1190, 540 PTO
NI 509, 540 PTO

MOWERS

2011 Land Pride RC3615 batting mower, 15' JD HX15 15' batting mower
JD 1518 15' batting mower, 1000 PTO, laminated tires, S/N 3527
JD MX5 5', 3 pt., 540 PTO,
JD 38 sickle mower
Woods 9020 15', 540 PTO, laminated tires,
Vicon 7.5' disc mower 3 pt.,
Patriot finishing mower, 6', 3pt.
New Idea 5409 disc mower, 540 PTO, 9', 3 pt., S/N HL31242

RAKES

Vermeer WR220 V-rake, 10 wheel
Vermeer RW20 V- rake, 9'
H&S 9 wheel hay rake
JD 702V hay rake, 11 wheel, kicker wheel, hyd. raise
NH 258 hay rake, dolly wheel
(2) NH basket rakes



Details at SteffesGroup.com

View other side for