

AUCTION

LARGE FARM EQUIPMENT

17059 2nd St NE, Hillsboro, ND 58045

TUESDAY, MARCH 4 | 10AM

AUCTIONEER'S NOTE: The Jennens' are downsizing their farming operation. Most equipment has been shedded and an excellent maintenance program is in place. Major equipment begins selling at 11:00 AM. Live online bidding available on major equipment. Registration, terms, & details at SteffesGroup.com.

4WD TRACTORS

2010 JD 9430, deluxe cab, active seat, buddy seat, powershift, 5 hyd., return flow, 1000 PTO, integrated auto steer, diff lock, HID lights, 520/85R42 triples, 2,329 hrs., S/N016940
2008 JD 9230, deluxe cab, buddy seat, 6 hyd., return flow, 1000 PTO, integrated auto steer, diff lock, HID lights, inside weights, Michelin 52/85R42 press steel duals, 4,463 hrs., S/N002473
2005 JD 9620, powershift, 4 hyd., return flow, integrated auto steer, diff lock, HID lights, inside weight pkg., Michelin 800/70R38 metric duals, 3,478 hrs., S/N030997
2006 JD 9520, Scrapper Special, powershift, 4 hyd., return flow, integrated auto steer, diff lock, HID lights, front suitcase weights, rear inside weights, outside dual weights all around, 710/70R42 press steel duals, 5,135 hrs., S/N042756
2006 JD 9120, deluxe cab, active seat, 5 hyd., return flow, integrated auto steer, diff lock, rock box, HID lights, 380/90R54 press steel duals, 2,628 hrs., S/N120040949
2003 JD 9120, deluxe cab, active seat, powershift, 5 hyd., return flow, integrated auto steer, rock box, HID lights, 380/90R54 press steel duals, 3,273 hrs., S/N010914
2002 JD 9120, deluxe cab, 5 hyd., return flow, 1000 PTO, integrated auto steer, diff lock, HID lights, rock box, 380/90R54 press steel duals, 3,671 hrs., S/NP002038

MFWD TRACTORS

2006 JD 8130, MFWD, deluxe cab, 4 hyd., power beyond, 3 pt., quick hitch, 3 PTOs, integrated auto steer, diff lock, rock box, HID lights, front fenders, front suitcase weights, 380/90R54 press steel duals, 3,117 hrs., S/N005320
2002 JD 8420, MFWD, deluxe cab, active seat, ILS, powershift, 4 hyd., return flow, 3 pt., quick hitch, 1000 PTO, integrated auto steer, diff lock, rock box, HID lights, front fenders, front suitcase weights, Michelin 380/90R54 press steel duals, 5,225 hrs., S/N003832
2004 JD 7820, MFWD, deluxe cab, active seat, IVT, 3 hyd., 3 pt., quick hitch, 540/1000 PTO, integrated auto steer, diff lock, left hand reverse, HID lights, JD 746 quick tach self-leveling loader, 5-line grapple, joystick control, rear weights, 14.9-46 press steel duals, 380/85R42 front tires, 6,622 hrs., S/N10452
1993 JD 4960, MFWD, 3 hyd., return flow, powershift, 3 hyd., return flow, 3 pt., quick hitch, 1000 PTO, diff

MFWD TRACTORS

lock, HID lights, front fenders, 380/90R46 press steel duals, 14.9-30 front tires, shows 0575 hrs., S/N005214
2003 JD 6220, CAH, power quad, left hand reverse, 2 hyd., 3 pt., 540 PTO, JD 620 loader, joystick control, 18.4-30 tires, S/N363430
1978 JD 4640, powershift, 3 hyd., power beyond, 3 pt., quick hitch, 1000 PTO, rock box, 18.4-30 press steel duals, 3,478 hrs., S/N002588R
1981 JD 4440, quad range, 3 hyd., 3 pt., quick hitch, 540/1000 PTO, diff lock, front suitcase weights, 14.9-46 band duals, 15,027 hrs., S/N045493R
1975 JD 4430, quad range, 2 hyd., 3 pt., quick hitch, 540/1000 PTO, diff lock, rock box, 18.4-30 clamp-on hub duals, 11,393 hrs., S/N047012R
1970 JD 4020, factory cab, gear, 2 hyd., 3 pt., quick hitch, 540/1000 PTO, diff lock, 18.4-34 rear tires, shows 6,717 hrs., S/N231434
1963 JD 4010, open station, gas, 1 hyd., 3 pt., quick hitch, front weights, 14.9-38 rear tires, shows 2,659 hrs., S/N1A3611

SKID STEER LOADER & ATTACHMENT

2007 JD 320, CAH, aux. hyd., quick tach, 70" bucket, rear weight pkg., 2,320 hrs., S/N153880
Skid steer loader bucket, 74", grapple tine

GPS EQUIPMENT

(7) JD 2600 displays w/SF1 activations
(2) JD brown box globes w/SF2 antenna radio RTK
(5) Starfire ITC globes, SF1
(3) Starfire 3000 globes, SF1
(3) Starfire original SF 1-2 globes (3) Brown boxes w/processors, SF1 cards
Brown box w/processor, SF2 card

COMBINES

2012 JD S690, Contour-Master, deluxe controls, PRWD, integrated auto steer, TouchSet, 5 spd. feeder house, ProDrive, 26" high cap, unloading auger, power fold hopper, fine cut chopper, power tailboard, 900/65R32 single tires, 28LR-26 rear tires, 591 sep. hrs., 962 engine hrs., S/N745655
2012 JD S670, Contour-Master, deluxe controls, PRWD, 26" high cap, unloading auger, Mauser hopper ext., HID lights, fine cut chopper, power tailboard, 520/85R42 straddle duals,

COMBINES

28L-26 rear tires, 595 sep. hrs., 936 engine hrs., S/N747012
2002 JD 9750, STS, Contour-Master, deluxe controls, PRWD, integrated auto steer, Y&M, long unloading auger w/extender, fine cut chopper, converted single pt., 520/85R42 straddle duals, 600/65R28 rear tires, 3,561 sep. hrs., 5,484 engine hrs., S/N695954
1992 JD 9600, DAS, fore/aft, JD ATU, row auger, 30.5-32 front tires, 16.9-24 rear tires, 4,525 sep. hrs., 7,527 engine hrs., S/N645536

HEADS

2012 JD 618C non-chopping corn head, 18x22", header height, knife rolls, fold, deck plates, outer gather ext., stalk lights, S/N745263
2012 JD 618C non-chopping corn head, 18x22", hyd. deck plates, knife rolls, stubble lights, outer gathering ext., S/N745222
2009 JD 612C chopping corn head, 12x22", hyd. deck plates, knife rolls, stubble lights, 2012 JD 640 flex draper, 40", fore/aft, poly, stubble lights, Cray CWS wind bar, S/N745608
2010 JD 635 flex head, fore/aft, poly, stubble lights, Cray CWS wind bar, S/N738207
2009 JD 635 flex head, fore/aft, poly, stubble lights, Cray CWS wind bar, S/N731660
2005 JD 630 flex head, fore/aft, poly, stubble lights, S/N711566
1997 JD 930 flex head, 30", fore/aft, poly, stubble lights, Cray 6 bat air reel, S/N671500

GRAIN CARTS & GRAVITY WAGONS

2013 Brent Avalanche 1596 grain cart, 1,500 bu., 4-wheel steer, 22" auger, roll tarp, electronic scale, light pkg., S/NB-32130136
2002 Brent 876 grain cart, corner auger, roll tarp, 20.8-42 straddle duals, S/NB18-850-141
Brent 620 grain cart, side auger, 24.5-32 tires, S/N86-620264
Unverferth 335 gravity wagon, 225 bu., roll tarp

AIR DRILL, CARTS & DRILL

2002 JD 1820 air seeder, 62", full floating hitch, 7-1/2" space, manifold monitor, tandems across, rubber packer wheels, JD 1900 tow-between commodity cart, 270 bu. twin compartment, vari-rate drive, hyd. fill auger, rear lights, 28L-26 diamond tires, cart S/N675324, seeding tool S/N695322

AIR DRILL, CARTS & DRILL

2000 JD 1900 tow-behind commodity cart, 350 bu., 3 compartment, vari-rate, hyd. fill auger, ext. hopper, 420/80R46 straddle duals, S/N675324
JD 750 no till drill, 20", set up for 15" space, 2 pt., Yetter hyd. markers, S/N018986

PLANTERS

2009 JD DB88 CCS planter, 48x22", central fill, eSet units, in-furrow liquid fertilizer, vari-rate drive, Pro shaft, pin adj. row cleaners, Refuge Plus, 850 gal. liquid tank, hyd. John Blue pump, bottom fill, pneumatic down pressure, hyd. markers, corn & soybean discs, rear globe mast, mini hopper, S/N730102
2009 JD DB88 CCS planter, 48x22", Pro shaft, RowCommand, eSet units, pneumatic down pressure, in-furrow liquid, 850 gal. liquid poly tank, hyd. John Blue pump, Refuge Plus, rear globe tower, Yetter row cleaners, hyd. fold markers, corn & soybean discs, S/N735107

OTHER TILLAGE EQUIPMENT

2011 Summers Super Roller, 45", hyd. fold, 42" drum, tandem duals, light pkg., S/NKO497
2004 JD 2400 chisel plow, 43", full floating hitch, AccuDepth, tandems across, Summers heavy duty harrow, S/N001496
1993 JD 1650 chisel plow, 50", tandems across, single pt. depth, Summers 3-bar harrow, rear hitch
2012 JD 637 rock flex tandem disc, 65", 9" space, 24" blades, hyd. adj., heavy duty center walking tandem, tandems across, S/N745501
2004 JD 2700 disc ripper, 7 shank, 30" front & rear discs, walking tandems, single pt. depth, hyd. rear disc lever, S/N002094
2012 JD 512 disc ripper, 9 shank, 30" space, 22" 6", rock flex front & rear disc gang 11" space, single pt. depth, walking tandems across, wing stabilizer wheels, S/N014631
Case-IH Ecotiger 730B disc ripper, 7 shank, 16", rear disc levers
Case-IH Ecotiger 730B disc ripper, 7 shank, 16", rear disc levers, for parts
2008 JD 3710 auto reset plow, 10 bottom, vari-width, on land hitch, walking tandems, hinged middle, S/N004537

FIELD CULTIVATORS

2004 JD 2210 field cultivator, 64", full floating hitch, tandems across, AccuDepth, JD 3-bar harrow, heavy duty rear hitch, plumbed hyd. & electric, S/N000354
2004 JD 2200 field cultivator, 54", full floating hitch, tandems across, AccuDepth, Summers 4-bar harrow, heavy duty rear hitch, plumbed hyd. & electric, S/N000334
2003 JD 2210 field cultivator, 54", full floating hitch, tandems across, AccuDepth, JD 3-bar harrow, heavy duty rear hitch, plumbed hyd. & electric, S/N000334
2003 JD 2200 field cultivator, 50", full floating hitch, tandems

FIELD CULTIVATORS

across, AccuDepth, JD 3-bar harrow, heavy duty rear hitch, plumbed hyd. & electric
JD 1060 field cultivator, 60", tandems across, single pt. depth, gauge wheels, 3-bar harrow

HARROWS

2013 Unverferth 1225 rolling harrow, 60", twin basket, buster bar leveler, expandable pole, light pkg., tandem duals
2013 Unverferth UM rolling harrow, 55", twin basket, buster bar leveler, expandable pole, light pkg., tandem duals, S/NAS7120104
2011 Unverferth 1225 rolling harrow, 55", twin basket, buster bar, tandem duals, light pkg., expandable pole, S/NAS1140125
2008 Unverferth 1235 rolling harrow, 50", twin basket, buster bar leveler, complete hyd. fold
2010 Summers Super Harrow, 40", hyd. down pressure, 26" teeth, light pkg., S/N11166
Herman harrow, 60", hyd. fold

ROW CROP EQUIPMENT

side discharge, steel cup, rear conveyor, 1000 PTO, S/N59-125
1988 Yetter minimum till rotary hoe, 40", flat-foat, cab guard, 3 pt.

SEMI TRACTORS & TRUCKS

1994 Peterbilt 377, flat top sleeper, 3176 Cat, 10 spd., air ride, fixed 5th plate, twin aluminum fuel tanks, 11-24.5 tires, outside aluminum rims, shows 95,491 miles
1990 Peterbilt 377, day cab, Series 60 Detroit, Eaton Fuller 13 spd., air ride, air slide 5th, diff lock, PTO w/wet kit, aluminum headache rack, 22.5 tires, aluminum front & steel rear rims, shows 1,035,290 miles
1987 Freightliner day cab twin screw, Formula 855 Cummins, 9 spd., spring ride, auto up/down 3rd axle, set up with Tyler 10 ton fertilizer tender, rear discharge, roll tarp, PTO, 11-24.5 front tires on steel rims, 11-22.5 rear tires on aluminum, shows 913,789 miles
1974 Ford 9000 twin screw cab & chassis, Super 250 Cummins, 10 spd., Berths 18' flatbed, 3,000 gal. fiberglass tank, 217,368 miles

PICKUP & SUVs

2007 GMC 2500HD, Z71 crew cab, Duramax diesel, automatic, 4WD, SLT pkg., leather, heated seats, sunroof, brake controller, OnStar, tonneau cover, grill guard, running boards, rear split window, 173,735 miles
2007 Chevrolet Tahoe LT, automatic, 4WD, cloth, shows approx. 125,423 miles
2003 Cadillac Escalade, leather, loaded, 2WD, aluminum wheels

HOPPER BOTTOM & OTHER TRAILERS

1995 Timple aluminum hopper bottom, 42"x66" sides, non-ag hoppers, air ride, TRS roll tarp, 24.5 tires on aluminum rims
1992 Wilson aluminum hopper bottom, 42"x66" sides, non-ag hoppers, air ride, ShurLok roll tarp, 24.5 tires on steel rims
1992 Wilson aluminum hopper bottom, 48"x78" sides, non-ag hoppers, air ride, ShurLok roll tarp, 24.5 tires on aluminum
1984 Wilson aluminum hopper bottom, 42"x66" sides, non-ag hoppers, spring ride, ShurLok roll tarp, 24.5 tires on steel rims
1986 Heil tandem axle water trailer, spring ride, 8,800 gal. single compartment, 3' bottom fill, Honda transfer pump, 11-22.5 tires on steel rims
Matteo's single axle header trailer, 30'
2012 Unverferth 542 tandem axle header trailer, 42", light pkg.
2004 Unverferth Roadrunner, 636 tandem axle header trailer, 36", light pkg., S/NA46960138
2005 Unverferth Roadrunner HT tandem axle header trailer, 38", light pkg., S/ND43750120
May tandem axle bumper hitch trailer, 22", 17' bed, 5 dovetail,

ROW CROP EQUIPMENT

2013 Loftness Crop Logix pull-type stalk shredder,

ROW CROP EQUIPMENT

side discharge, steel cup, rear conveyor, 1000 PTO, S/N59-125
1988 Yetter minimum till rotary hoe, 40", flat-foat, cab guard, 3 pt.

SEMI TRACTORS & TRUCKS

1994 Peterbilt 377, flat top sleeper, 3176 Cat, 10 spd., air ride, fixed 5th plate, twin aluminum fuel tanks, 11-24.5 tires, outside aluminum rims, shows 95,491 miles
1990 Peterbilt 377, day cab, Series 60 Detroit, Eaton Fuller 13 spd., air ride, air slide 5th, diff lock, PTO w/wet kit, aluminum headache rack, 22.5 tires, aluminum front & steel rear rims, shows 1,035,290 miles
1987 Freightliner day cab twin screw, Formula 855 Cummins, 9 spd., spring ride, auto up/down 3rd axle, set up with Tyler 10 ton fertilizer tender, rear discharge, roll tarp, PTO, 11-24.5 front tires on steel rims, 11-22.5 rear tires on aluminum, shows 913,789 miles
1974 Ford 9000 twin screw cab & chassis, Super 250 Cummins, 10 spd., Berths 18' flatbed, 3,000 gal. fiberglass tank, 217,368 miles

HOPPER BOTTOM & OTHER TRAILERS

flip-up ramps, pop-up center, (2) 7,000 lb. axles

SPRAYERS & ATTACHMENTS

2007 JD 4930 self-propelled sprayer, 120' boom, 5-nozzle bodies, 1,200 gal. SS tank, integrated auto steer, 2600 display w/Swath Pro, 5-section boom control, HID lights, traction control, hyd. adj. axles, fenders, 380/105R50 rear hub duals, 3,600 hrs., S/N002186
New Leader L3220G4-11 twin spinner box for JD 4930 power unit
2011 JD 4830 self-propelled sprayer, 100' boom, 5-nozzle bodies, 1,000 gal. SS tank, 3" fill, integrated auto steer, 2600 display w/Swath Pro, 5-section boom control, return to height auto boom, left & right fence line, HID lights, traction control, hyd. tread adj., fenders, wheel shield covers, 380/90R50 rear hub duals, 760 hrs., S/N013753
2009 Summers Ultra Super Sprayer, 132' boom, triple nozzle bodies, 1,250 gal. poly tank, 200 gal. rinse tank, full hyd. fold, hyd. pump, JD rate controller, touch down wheels, adj. axle, 380/90R46 straddle duals, S/NIO211
Summers pull-type sprayer, 100', single nozzle bodies, 1,000 gal. low pro tank, wind screens, hyd. pump, foamer, on/off boom control, adj. axle, 14.9-38 bar singles, S/NW0518
Summers sprayer, 2 pt., 90' hyd. lift booms, triple nozzle bodies, 750 gal. poly tank, rear casters, hyd. pump, rear fill, 3-section boom control, S/NE0375

FERTILIZER & NH3 EQUIPMENT

JD DN345 tandem axle fertilizer spreader, New Leader G4 Series twin spinner spreader, roll tarp, electronic scale, 1000 PTO, 65x43.25 tandems, S/N002107
1995 Mobility tandem axle fertilizer spreader, 6-1/2 ton, twin spinner
Shop-built fertilizer tender, set up on 4-wheel gear, 1,000 gal. liquid tank, 170 bu. dry tank, hyd. fill auger, electric pump for liquid
Shop-built dry fertilizer bander applicator, JD 1780 bar conversion, 48x22", JD 1850 disc units, for tow-behind cart application
Horvick HT1325 tandem axle liquid caddy, 1,400 gal. poly tank, Honda transfer pump, bottom fill
Alloway NH3 side dresser, 40", gauge wheels, coil shanks, 3 pt.

HAY EQUIPMENT

Frontier WR-2114 rake, 16-wheel, hyd. fold, light pkg., S/N001195
2013 JD 569 Premium baler, Cover-Edge, pickup gauge wheels, 1000 PTO, flotation tires, S/N1E00569DLCD390097

HAY EQUIPMENT

Haukaas Quick Pick tandem axle bale hauler, 6 bale, full hyd., light pkg., S/N079019

SCRAPER & DITCHERS

KeWay rotary ditcher, 38", 3 pt., 1000 PTO

TRACTOR FORKLIFT

1978 JD 480A tractor forklift, diesel, rear weight pkg., 16.9-24 front tires, shows 1,714 hrs.

OTHER EQUIPMENT

JD 1850 air seeder frame, 42" Richards chain-style HD rockpicker, flotation tires
2003 Schulte S150 trailing mower, hyd. fold, safety chain, (6) rear tires, 1000 PTO
2007 Buhler Farm King 1080 snowblower, 108", hyd. chute, hyd. spout, 3 pt., 1000 PTO
2009 Agri Machinery WC-2 chipper, 3 pt., S/N09110008
Shop-built water pump, 15", hose, 540 PTO
JD 997 lawn tractor, diesel, 72" Iron Pro front deck, 518 hrs.
Cub Cadet 122 lawn tractor, JD 525 front deck lawn tractor, not running
(3) 3,000 gal. poly tanks
1,500 gal. poly tank
1,000 gal. poly tank, converted to diesel
Honda transfer pumps, assorted
Netpune fuel pump, 60 gpm
Shop dual carrier

CORVETTE & TRAVEL TRAILERS

2006 Chevrolet Corvette convertible, 3LT pkg., 6 liter LS2, paddle shift, leather, loaded, shows 29,650 miles
2012 Innsbruck Supreme 28 RLS tandem axle bumper hitch trailer, single slideout, sleeps 4, master bedroom in front, living room, 2 doors, fully furnished, awning
2006 R-Vision Trail Sport TS-270BS tandem axle bumper hitch trailer, single slideout, sleeps 6, awning, low profile

TIRES & HUBS

Firestone 35.5-32 tire on JD 10-bolt rim
(4) Goodyear 520/85R42 tires on 10-bolt JD rims
(4) Goodyear 420/80R46 tires Michelin 800/70R38 tire Michelin 710/70R42 takeoffs at 25-35%
(2) 21.5-16 tires on JD rims
(2) 380/90R50 press steel duals
(4) 380/90R54 inside tires and rims, for 20-30 Series
(4) 380/90R54 press steel tires & rims
(2) 10-bolt hubs, for 22" space
(4) 10-bolt hubs, for JD
(12) ATV ditching wheels

FARM SUPPORT ITEMS

(3) JD Cover-Edge pallets, New
(12) corn bags, 300x10" wide
(4) corn bags, 250x10"
(30) bin sheets

SCRAPER & DITCHERS

KeWay rotary ditcher, 38", 3 pt., 1000 PTO

TRACTOR FORKLIFT

1978 JD 480A tractor forklift, diesel, rear weight pkg., 16.9-24 front tires, shows 1,714 hrs.

OTHER EQUIPMENT

JD 1850 air seeder frame, 42" Richards chain-style HD rockpicker, flotation tires
2003 Schulte S150 trailing mower, hyd. fold, safety chain, (6) rear tires, 1000 PTO
2007 Buhler Farm King 1080 snowblower, 108", hyd. chute, hyd. spout, 3 pt., 1000 PTO
2009 Agri Machinery WC-2 chipper, 3 pt., S/N09110008
Shop-built water pump, 15", hose, 540 PTO
JD 997 lawn tractor, diesel, 72" Iron Pro front deck, 518 hrs.
Cub Cadet 122 lawn tractor, JD 525 front deck lawn tractor, not running
(3) 3,000 gal. poly tanks
1,500 gal. poly tank
1,000 gal. poly tank, converted to diesel
Honda transfer pumps, assorted
Netpune fuel pump, 60 gpm
Shop dual carrier

CORVETTE & TRAVEL TRAILERS

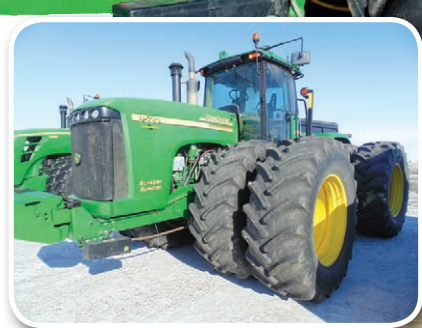
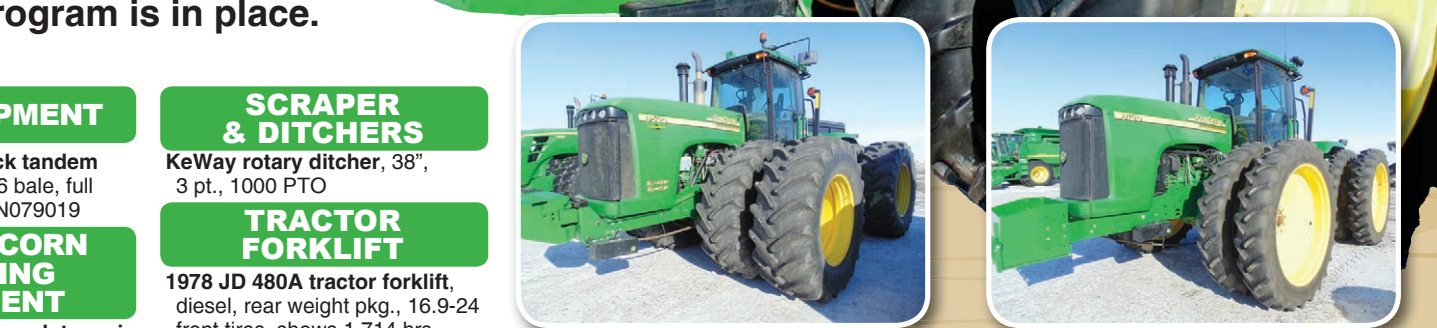
2006 Chevrolet Corvette convertible, 3LT pkg., 6 liter LS2, paddle shift, leather, loaded, shows 29,650 miles
2012 Innsbruck Supreme 28 RLS tandem axle bumper hitch trailer, single slideout, sleeps 4, master bedroom in front, living room, 2 doors, fully furnished, awning
2006 R-Vision Trail Sport TS-270BS tandem axle bumper hitch trailer, single slideout, sleeps 6, awning, low profile

TIRES & HUBS

Firestone 35.5-32 tire on JD 10-bolt rim
(4) Goodyear 520/85R42 tires on 10-bolt JD rims
(4) Goodyear 420/80R46 tires Michelin 800/70R38 tire Michelin 710/70R42 takeoffs at 25-35%
(2) 21.5-16 tires on JD rims
(2) 380/90R50 press steel duals
(4) 380/90R54 inside tires and rims, for 20-30 Series
(4) 380/90R54 press steel tires & rims
(2) 10-bolt hubs, for 22" space
(4) 10-bolt hubs, for JD
(12) ATV ditching wheels

FARM SUPPORT ITEMS

(3) JD Cover-Edge pallets, New
(12) corn bags, 300x10" wide
(4) corn bags, 250x10"
(30) bin sheets



Jeremy & Sara Jennen | 218.770.9392

or Brad Olstad at Steffes Group, 701.237.9173

TERMS: All items sold as is where is. Payment of cash or check must be made sale day before removal of items. Statements made auction day take precedence over all advertising. \$35 documentation fee applies to all titled vehicles. Titles will be mailed.



Steffes Group, Inc., 2000 Main Ave East, West Fargo, ND 58078

Brad Olstad ND319, Scott Steffes ND81, Bob Steffes ND82, Ashley Huhn ND843,
Eric Gabrielson ND890, Randy Kath ND894 | 701.237.9173 | SteffesGroup.com

